

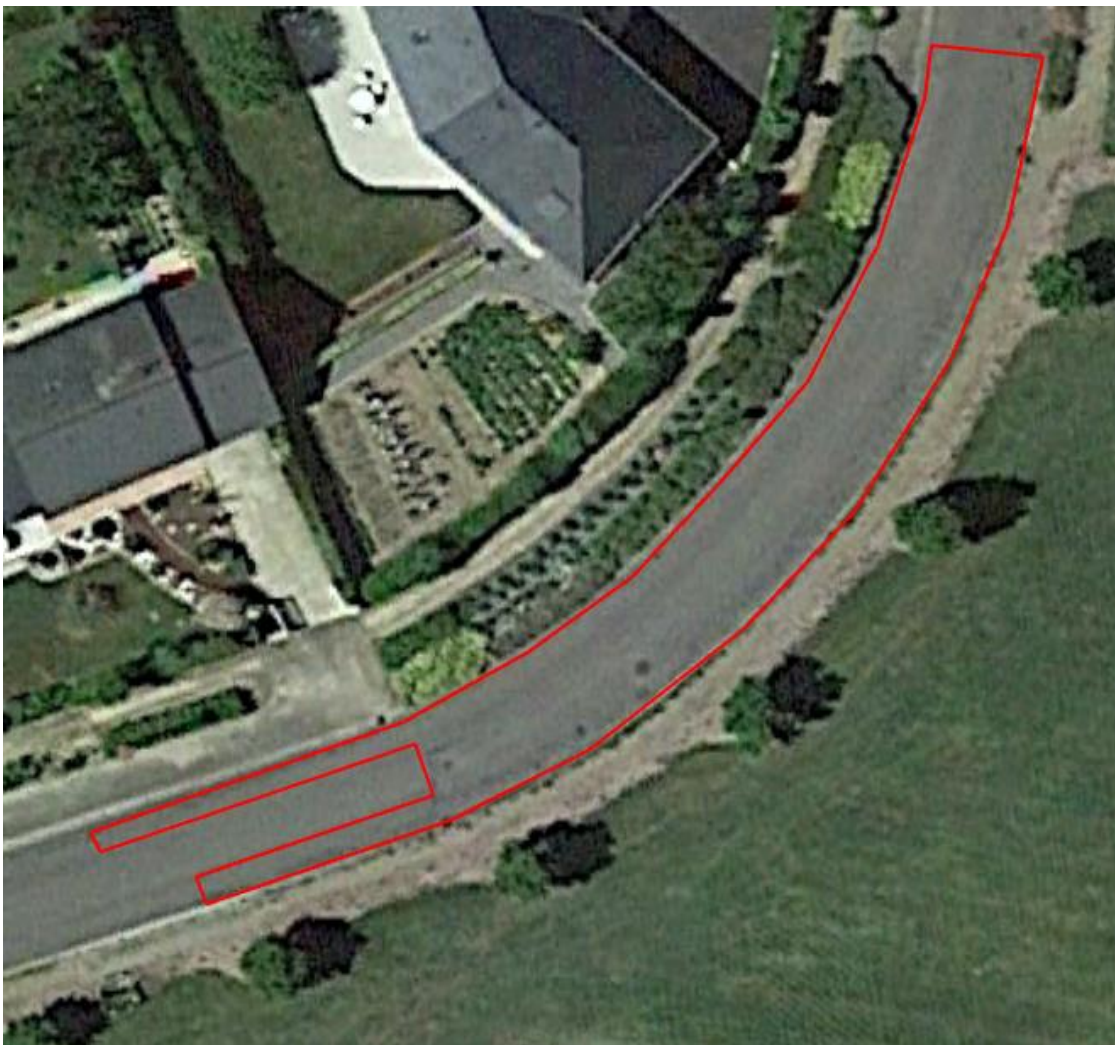
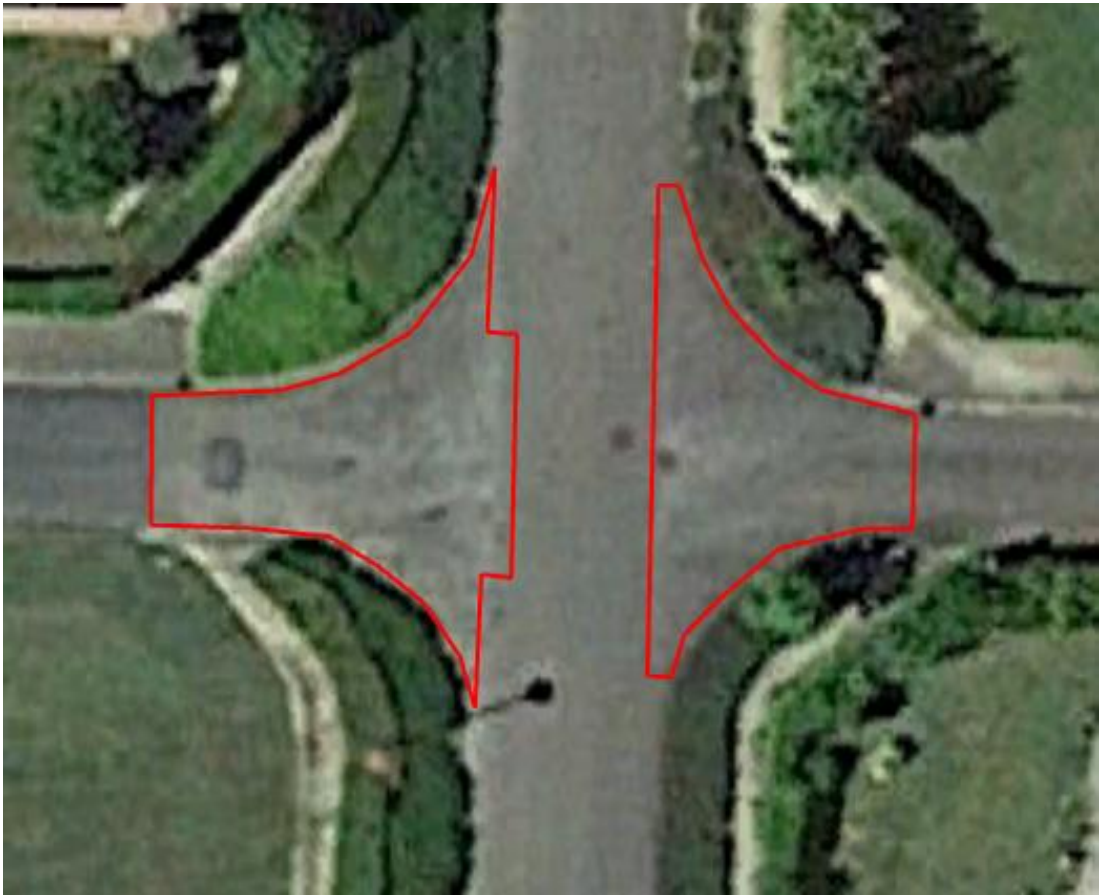
Cahier photo des lieux à reprendre.

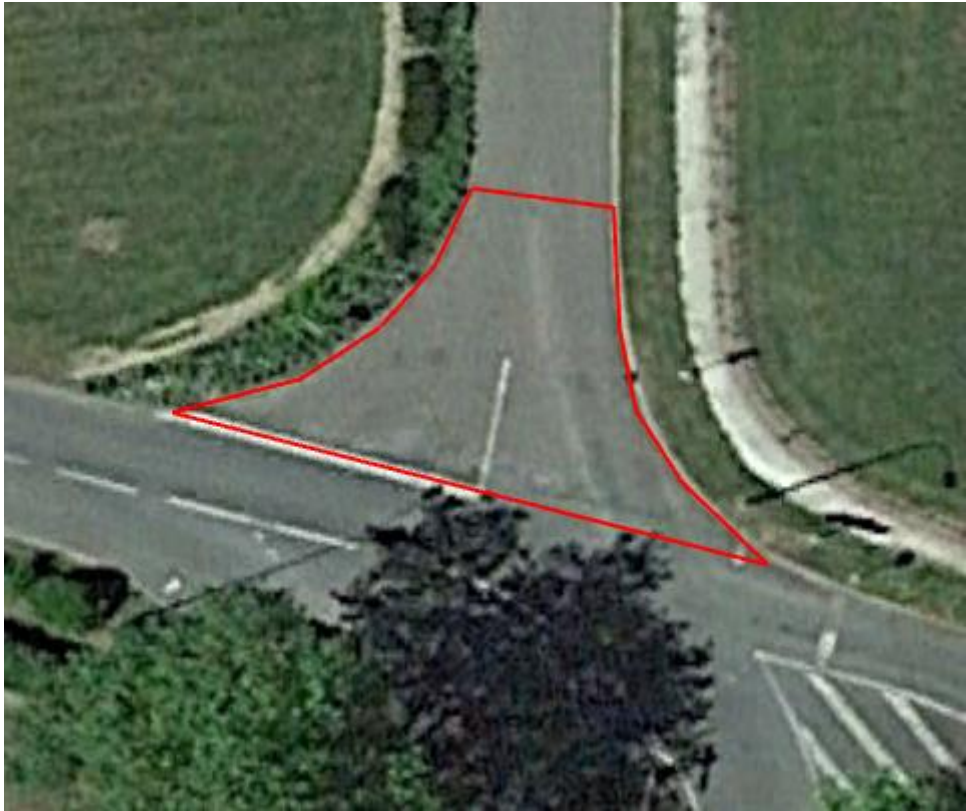
**Tranches fermes :**

↘ Rue des Halles



↘ Rue du Douanier Rousseau (3 tronçons)



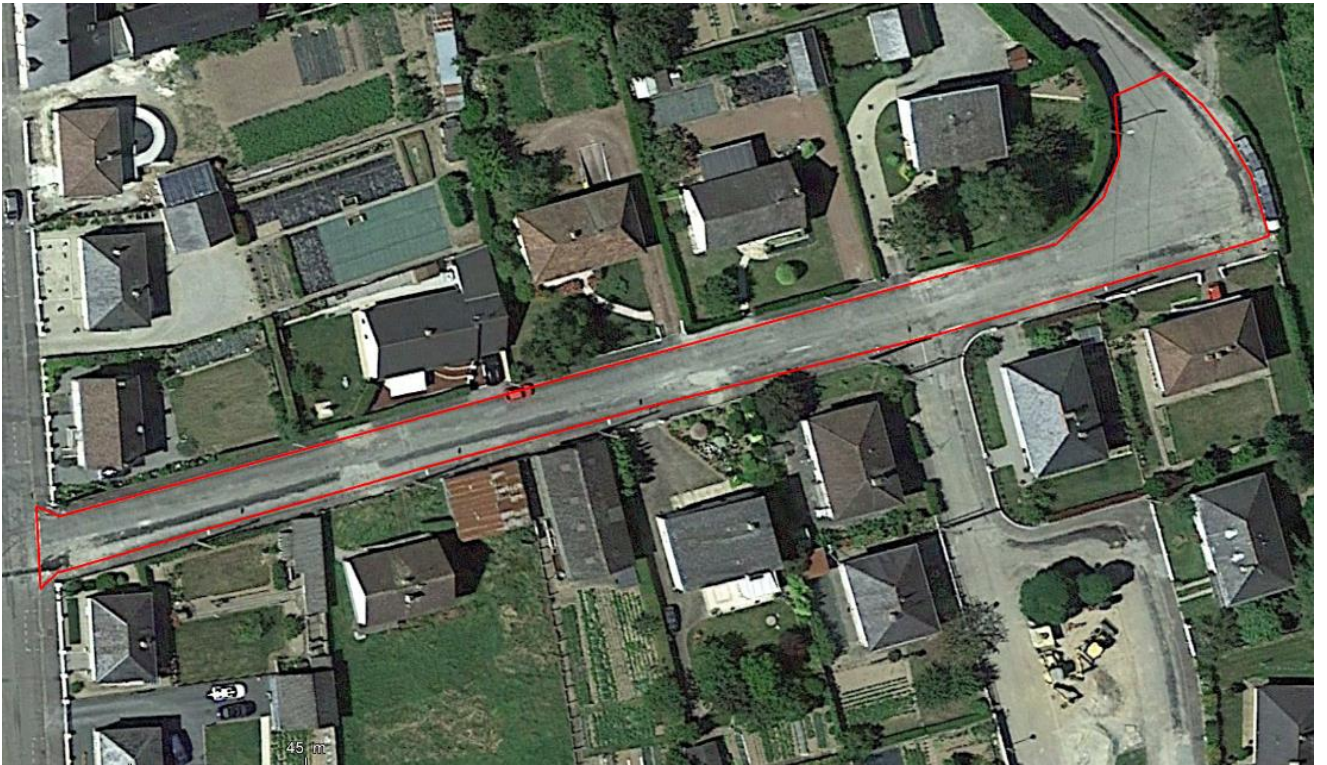


↘ Rue Robert Tatin (1 tronçon)





↘ Rue Lamartine



↘ Allée Georges Guynemer



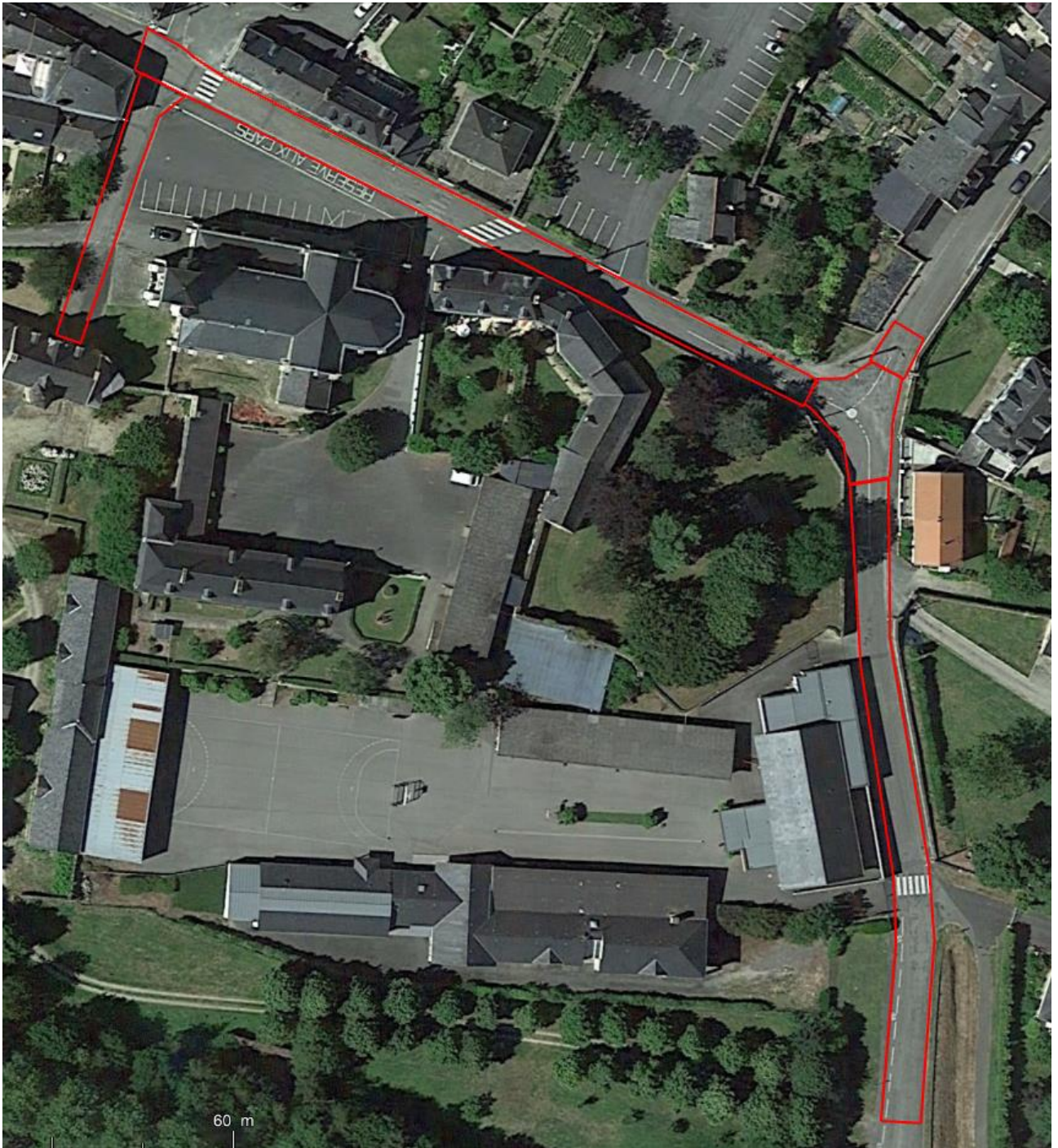
Place du Mûrier



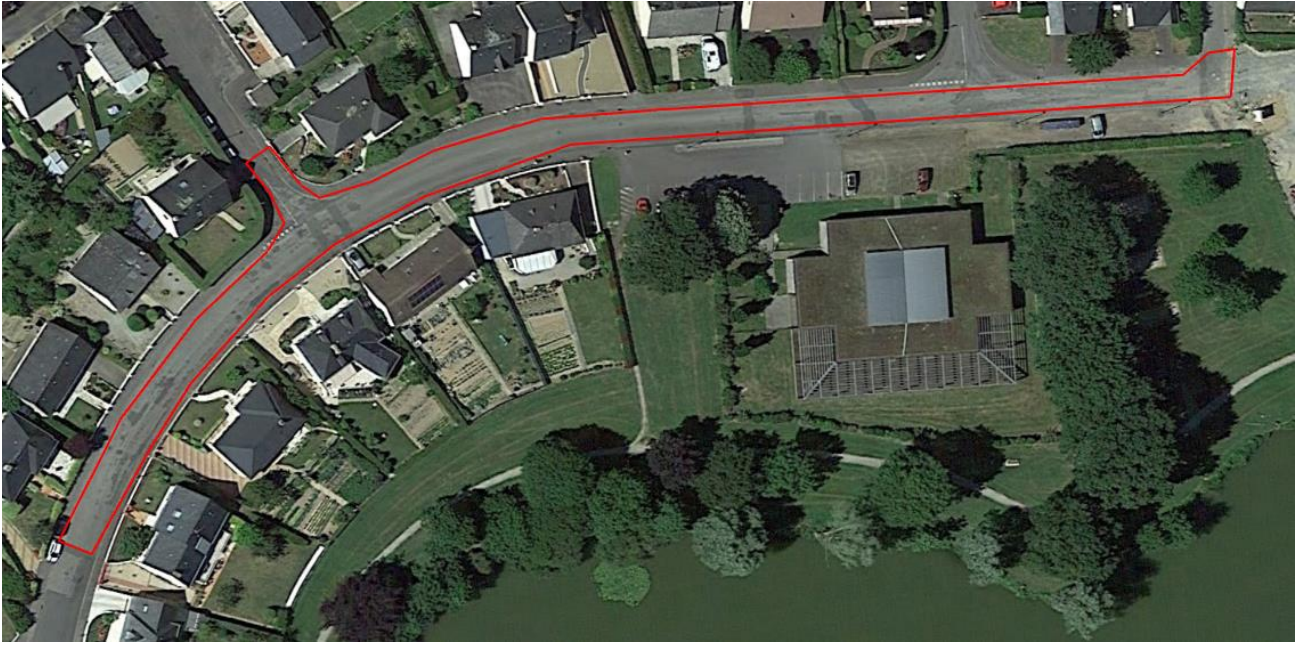
↘ Place de la Mairie  
Voir le plan PDF en pièce jointe du dossier

### Tranches optionnelles :

↘ Rue de la Chaussée aux Moines



↘ Rue Flandres Dunkerque



↘ Rue Jean Bouin





↘ Entrée transport GAUTHIER

